



**Rogers Bar HR  
“Turn-Out”  
Charolais Bull Sale  
2015**

Saturday, February 28, 2015  
Collins, Mississippi  
At the Ranch - 12:30 p.m.

# GENERAL INFORMATION

DAY, DATE, TIME: Saturday  
February 28, 2015  
12:30 p.m.

SALE LOCATION: Rogers Bar HR Ranch  
Collins, Mississippi  
(601) 765-8848  
(800) 343-5051

SALE HEADQUARTERS: Collins Inn & Suites  
Phone: (601) 765-0800

TRUCKING: Arrangements can  
be made at the sale.

AUCTIONEER: Tommy Barnes  
189 River Road  
Lowndesboro, Alabama 36752  
(334) 462-4004

RINGMEN: Charlie Woods  
Gulf Coast Cattleman

Floyd Wampler  
Charolais Journal  
(423) 612-2144

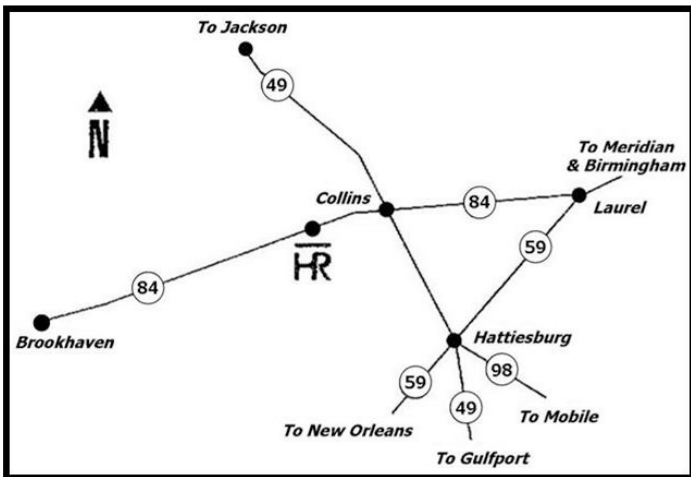
Luke Mobly  
Cattle Business in MS

Andy Grimes  
Cattle Today

RANCH MANAGER: Doug Rogers  
(601) 765-8848 (office)  
(601) 765-7751 (mobile)

## Schedule of Events

|          |                    |                                |
|----------|--------------------|--------------------------------|
| Friday   | 1:00-6:00          | View Sale Cattle (In Pasture)  |
| Saturday | 9:00-12:00         | View Sale Cattle               |
|          | 11:00-12:15        | Complimentary Lunch            |
|          | 12:30              | Turn-Out Bull Sale Begins      |
|          | Approximately 1:30 | Commercial Brangus Heifer Sale |



# TERMS & CONDITIONS

**BIDDING:** Each animal on which there are two or more bids will be sold to the highest bidder.

**TERMS:** The terms of the sale are cash. Checks are accepted and should be made payable to **Rogers Bar HR.**

**DISPUTES:** The auctioneer will settle any disputes as to bids by declaring all bids off and reselling the animal in question.

**HANDLING:** Each animal will be at the purchaser's risk as soon as sold and settlement must be made at the completion of the sale. We will be happy to care for your cattle for a reasonable time and cost and arrange for delivery at competitive prices if you prefer. Make such arrangements with Dorotheann Rogers.

**HEALTH:** All animals will have health certificates. They have each been semen tested and found fertile. The bulls have been vaccinated for IBR, BVD, PI3, 8-way Blackleg and wormed with Dectomax. Mississippi is now Tuberculosis free and Bangs free.

**BREEDERS GUARANTEE:** Rogers Bar HR guarantees all bull's semen and all Brangus heifers as breeding stock for one year from date of purchase. If an animal fails to perform, credit toward another animal will be given for future sales. All animals that do not perform and are returned must be in good condition and weight according to their age. Contact Doug Rogers if you have a problem.

**ANNOUNCEMENTS:** Announcements from the auction box will take precedence over the printed matter in the catalog.

**LIABILITIES:** All persons attending this sale do so at their own risk and the owner and agents assume no liability, legal or otherwise, for any accidents or loss of property which may occur.



*Rogers Bar HR*

*Ranching Since 1926*

1-800-343-5051

P.O. Box 1718 / Collins, Mississippi 39428

Dear Cattleman,

I would like to welcome you to Rogers Bar HR. My father started the Charolais herd in 1959 with the emphasis on important economic traits. The traits of calving ease, high weaning weights, and ease of keeping are always on the front of our mind when we are breeding and developing our cattle. But the most important thing that we have done has been to develop these traits on GRASS. Our bulls will not fall apart on you when you turn them out. Even though we have developed our herd on grass, they excel when placed on feed tests or in the feedlots. We have won more BIF tests than any other Charolais breeder in the nation! And we did it again this year by winning both the Florida Bull Test and the Hinds Bull Test. Our herd is not one that we bought and then tried to adapt to the Southeast. Our herd was developed over the last half century on the rolling hills of southeast Mississippi and after 56 years we feel that we have developed the best herd of Charolais in the Southeast and the United States. These efforts are evident in the number of Trait leaders that Rogers Bar HR has produced within the Charolais breed.

We have the selling philosophy of wanting to sell you a bull today, but we also want to sell you one when you replace him. That was one of the best lessons my father ever taught me. Our goal is to produce cattle that will put the most pounds on the quickest and the most efficiently... and we have been doing just that! Our cattle gain well on feed, but also on grass. More pounds at weaning mean more money in your pocket!

The cattle market is the best it has ever been! A 725 lb. steer will bring you \$1,500!!! The US cow herd is the smallest since the 1930's. The economy is looking up and agriculture exports are also up. You can get your cattle bigger, and they do not discount them for being large because gain is cheaper on grass than in the feed yard. Feeder cattle prices are at record highs. Today is the time to improve and enlarge your herd to take advantage of this economic situation.

We have had great demand for our bulls. Why? Because people are trading in their smaller black bulls and putting our Charolais bulls on their cows and are having fantastic results. They are having calves that grow and fit the market. With corn at record highs, feedlots want a calf that will grade select with as little corn as possible, and Charolais cross calves do just that.

If you need help selecting a bull, or if you have any questions, please give me a call at (601) 765-7751. Our philosophy is we want to sell you a bull not only today, but also tomorrow.

Yours for Better Charolais,

Doug Rogers

# Understanding EPDs

## Expected Progeny Differences (EPDs)

The expected differences in performance of a bull's progeny when compared to the average progeny performance of all bulls of the breed evaluated. **EPDs are directly comparable across all herds within a breed, but not across breeds.** Most knowledgeable people agree this is the most accurate way to evaluate cattle. **We have been performance testing for 56 years, and as you would expect, our EPDs are more accurate than most.**

## Birth Weight EPD (BW)

Birth weight EPDs predict the difference in average birth weights of a bull's calves compared to calves of other bulls. A positive value indicates heavier than average birth weights, while a negative value indicates lighter than average birth weights. This figure is more reliable than actual birth weight.

## Weaning Weight EPD (WW)

Weaning weight EPDs predict the difference in average 205-day weights of a bull's calves, compared to calves of all other bulls evaluated. The higher number the better. This figure is important if you sell calves at weaning.

## Yearling Weights EPD (YW)

Yearling weights EPDs predict the differences in average 365-day weight of a bull's progeny compared to progeny of all other bulls evaluated. The higher the number the better. This figure is especially important if you own your cattle through the feedlot.

## Milk

Milk EPDs predict the difference due to milking ability in average 205-day weights of a bull's daughters' calves compared to other bull's daughters' calves. The higher the value the better the milking ability of the bull's daughters. If you are saving daughters to go back in your herd, this is important.

## Total Maternal (TM)

Total Maternal EPD factors in milk plus growth of a bull's progeny. If you are saving a bull's daughters to go back in your herd, it is very important.

## Carcass Weight (CW)

Carcass Weight EPD is a predictor of pounds of retail product at a constant age endpoint. Positive values indicate bulls that should produce calves that have heavier carcasses, while negative values should result in lighter carcass weights

## Ribeye Area (REA)

Ribeye Area EPD is expressed in square inches and is a predictor of differences in ribeye area. Ribeye area has a positive relationship with weight, the larger the animal the larger the ribeye area.

## Fat Thickness (FAT)

Fat Thickness EPD is expressed in inches and is a predictor of differences in fat thickness.

## Marbling Score (MARB)

EPD is a prediction of the differences in the USDA subjective marbling score. Marbling is a subjective measure of the amount of intramuscular fat in the ribeye muscle.

## **Just some of the Trait Leaders Rogers Bar HR has produced**

The first question I would ask is “what is a trait leader?” A trait leader is a bull that has the highest performance in a particular trait with a high level of accuracy. For example, HBR Profit 729 is a weaning weight trait leader. That means that his calves are some of the fastest growing calves in the Charolais Breed!!! So if one of the bulls listed below in a bull’s pedigree you should feel very confident in that bull’s performance.

### **Weaning Weight Trait leaders**

HBR Profit 729 P

HBR Profit 639 P

HBR Magnum 93 P (Leader 3 times)

HBR Performer 181 P

### **Yearling Weight Trait leaders**

**HBR Performer 181 P**

### **Maternal Milk**

HBR Magnum 93 P

HBR Program 297 P

HBR Ace 230 P

### **Maternal Calving Ease**

HBR Magnum 93 P

JWK Impressive D040 P

### **Ribeye Area**

HBR Program 297 P

### **Carcass Fat**

HBR Program 297 P

### **Marbling**

HBR Program 297 P

JWK Impressive D040 P

### **Multiple Trait Leaders (low birth & high growth)**

HBR Cannon 2250 P

HBR Profit 554 P

HBR Magnum 542 P

# Lot 1

HBR Cannon 2250 ET

HBR Cannon 602 P

HBR Lady Magnum 850 P

## HBR Cannon 1312 P

HBR Program 26 P

HBR Lady Program 615 P

HBR Lady Magnum 986 P

DOB: 5/11/12

Polled

| BIRTH |    |    | WWR  |    |    | SCROT CIR |     |      |
|-------|----|----|------|----|----|-----------|-----|------|
| 83    |    |    | 114  |    |    | 41.5      |     |      |
| BW    | WW | YW | MILK | TM | CW | REA       | FAT | MARB |
| 5.7   | 42 | 69 | 29   | 50 | -  | -         | -   | -    |

# Lot 2

HBR Cannon 2250 ET

HBR Cannon 602 P

HBR Lady Magnum 850 P

## HBR Cannon 1612 P

HBR Cannon 2250 ET

HBR Lady Cannon 802 P

HBR Lady Magnum 986 P

DOB: 6/1/12

Polled

| BIRTH |    |    | WWR  |    |    | SCROT CIR |        |      |
|-------|----|----|------|----|----|-----------|--------|------|
| 70    |    |    | 98   |    |    | 39        |        |      |
| BW    | WW | YW | MILK | TM | CW | REA       | FAT    | MARB |
| 1.9   | 34 | 58 | 24   | 41 | 17 | -0.03     | -0.012 | 0.03 |

# Lot 3

HBR Stretch PLD

HBR Big Mack 638 P

HBR Lady Mack 459 P

## HBR Big Mack 105 P/S ET

HBR Magnum 347 P

HBR Lady Magnum 947 P

HBR Lady Ace 650 P

DOB: 11/1/12

Scurs

| BIRTH |    |    | WWR  |    |    | SCROT CIR |     |      |
|-------|----|----|------|----|----|-----------|-----|------|
| 84    |    |    | 100  |    |    | 40        |     |      |
| BW    | WW | YW | MILK | TM | CW | REA       | FAT | MARB |
| 5.0   | 35 | 59 | 18   | 36 | -  | -         | -   | -    |

## Lot 4

HEP Auto Pilot 101H ET  
HBR Auto Pilot 714 P  
HBR Lady Equalizer 409 P

### HBR Auto Pilot 109 P TW

HBR Magnum 93 P  
HBR Lady Magnum 944 P  
HBR Lady Mack 381 P ET

DOB: 11/7/12

Polled

| BIRTH |    |    | WWR  |    |    | SCROT CIR |     |      |
|-------|----|----|------|----|----|-----------|-----|------|
| 58    |    |    | 100  |    |    | 39.5      |     |      |
| BW    | WW | YW | MILK | TM | CW | REA       | FAT | MARB |
| 2.8   | 29 | 53 | 24   | 39 | -  | -         | -   | -    |

## Lot 5

LT Polled Value 9089  
SC Shadowbrook 449 ET  
JWK Tiara H116

### HBR Profit 129 P

HBR Program 26 P  
HBR Lady Program 537 P  
HBR Lady Magnum 674 P

DOB: 12/2/12

Polled

| BIRTH |    |    | WWR  |    |    | SCROT CIR |     |      |
|-------|----|----|------|----|----|-----------|-----|------|
| 80    |    |    | 114  |    |    | 40.5      |     |      |
| BW    | WW | YW | MILK | TM | CW | REA       | FAT | MARB |
| 2.3   | 43 | 73 | 16   | 37 | -  | -         | -   | -    |

## Lot 6

LT Polled Value 9089  
SC Shadowbrook 449 ET  
JWK Tiara H116

### HBR Profit 130 P

HEP Auto Pilot 101H ET  
HBR Lady Auto 078 P  
CC Southern Queen 482 P

DOB: 12/2/12

Polled

| BIRTH |    |    | WWR  |    |    | SCROT CIR |       |       |
|-------|----|----|------|----|----|-----------|-------|-------|
| 70    |    |    | 100  |    |    | 41        |       |       |
| BW    | WW | YW | MILK | TM | CW | REA       | FAT   | MARB  |
| 1.6   | 40 | 76 | 17   | 37 | 28 | 0.27      | 0.008 | -0.04 |



# Lot 7

HEP Auto Pilot 101H ET  
HBR Auto Pilot 714 P  
HBR Lady Equalizer 409 P

## HBR Auto Pilot 131 P

HBR Magnum 347 P  
HBR Lady Magnum 947 P  
HBR Lady Ace 650 P

DOB: 12/3/12

Polled

| BIRTH |    |    | WWR  |    |    | SCROT CIR |     |      |
|-------|----|----|------|----|----|-----------|-----|------|
| 82    |    |    | 100  |    |    | 39.5      |     |      |
| BW    | WW | YW | MILK | TM | CW | REA       | FAT | MARB |
| 3.1   | 30 | 57 | 26   | 41 | -  | -         | -   | -    |

# Lot 8

HBR Profit 480 P  
HBR Profit 672 P  
HBR Dolly 604P

## HBR Profit 138 P

HBR Cannon 2251 P/S ET  
HBR Lady Cannon 047 P  
HBR Dolly 869 P

DOB: 12/19/12

Polled

| BIRTH |    |    | WWR  |    |    | SCROT CIR |        |      |
|-------|----|----|------|----|----|-----------|--------|------|
| 76    |    |    | 101  |    |    | 40.5      |        |      |
| BW    | WW | YW | MILK | TM | CW | REA       | FAT    | MARB |
| 3.1   | 32 | 55 | 19   | 35 | 18 | -0.03     | -0.012 | 0.00 |

# Lot 9

HBR Cannon 2250 ET  
HBR Cannon 666 P  
HBR Lady Program 977 P

## HBR Cannon 8264 P

HBR Big Mack 797 P  
HBR Lady Big Mack 403 P  
HBR Lady Program 011 P

DOB: 12/29/12

Polled

| BIRTH |    |    | WWR  |    |    | SCROT CIR |     |      |
|-------|----|----|------|----|----|-----------|-----|------|
| 75    |    |    | 108  |    |    | 37        |     |      |
| BW    | WW | YW | MILK | TM | CW | REA       | FAT | MARB |
| 1.3   | 33 | 55 | 19   | 36 | -  | -         | -   | -    |

# Lot 10

HBR Magnum 93 P  
HBR Magnum 514 P ET  
HBR Lady Duke 606 P

## HBR Magnum 142 P

HBR Equalizer 941 P ET  
HBR Lady Magnum 702 P  
HBR Lady Gainer 955 P

DOB: 12/31/12

Polled

| BIRTH |    |    | WWR  |    |    | SCROT CIR |        |       |
|-------|----|----|------|----|----|-----------|--------|-------|
| 78    |    |    | 93   |    |    | 39.5      |        |       |
| BW    | WW | YW | MILK | TM | CW | REA       | FAT    | MARB  |
| 1.8   | 30 | 51 | 20   | 35 | 25 | 0.20      | -0.003 | -0.02 |

# Lot 11

RAC Mac's Factor 171A  
HBR Program 297 P  
HBR Lady Liz 721 P

## HBR Program 41

Eatons Ideal P 5060  
Eatons Shannon 81068  
Eatons Shannon 5821

DOB: 1/10/13

Polled

| BIRTH |    |    | WWR  |    |    | SCROT CIR |     |      |
|-------|----|----|------|----|----|-----------|-----|------|
| 80    |    |    | 100  |    |    | 37        |     |      |
| BW    | WW | YW | MILK | TM | CW | REA       | FAT | MARB |
| -0.1  | 24 | 46 | 16   | 29 | -  | -         | -   | -    |

# Lot 12

HBR Program 297 P  
HBR Program 797 ET  
HBR Lady Magnum 319 P

## HBR Program 146 P/S

HBR Cannon 2250 ET  
HBR Lady Cannon 840 P  
HBR Dolly 867 P

DOB: 1/11/13

Scurs

| BIRTH |    |    | WWR  |    |    | SCROT CIR |        |      |
|-------|----|----|------|----|----|-----------|--------|------|
| 76    |    |    | 100  |    |    | 36.5      |        |      |
| BW    | WW | YW | MILK | TM | CW | REA       | FAT    | MARB |
| 0.9   | 27 | 49 | 23   | 37 | 17 | 0.19      | -0.004 | 0.06 |

# Lot 13

Baldrige Kojack 29K  
HBR Harlan's Keystone 016 P  
HBR Lady Cannon 847 P

## HBR Keystone 05 P

HEP Auto Pilot 101H ET  
HBR Lady Auto Pilot 035 P  
HBR Lady Icon 60 P

DOB: 1/14/13

Polled

| BIRTH |    |    | WWR  |    |    | SCROT CIR |     |      |
|-------|----|----|------|----|----|-----------|-----|------|
| 75    |    |    | -    |    |    | 38.5      |     |      |
| BW    | WW | YW | MILK | TM | CW | REA       | FAT | MARB |
| 2.9   | 37 | 68 | 25   | 44 | -  | -         | -   | -    |

# Lot 14

HEP Auto Pilot 101H ET  
HBR Auto Pilot 704 P  
HBR Lady Program 464 P

## HBR Auto Pilot 148 P

HBR Cannon 2251 P/S ET  
HBR Lady Cannon 940 P/S  
HBR Lady Magnum 611 P

DOB: 1/15/13

Polled

| BIRTH |    |    | WWR  |    |    | SCROT CIR |     |      |
|-------|----|----|------|----|----|-----------|-----|------|
| 84    |    |    | 97   |    |    | 41        |     |      |
| BW    | WW | YW | MILK | TM | CW | REA       | FAT | MARB |
| 2.6   | 38 | 69 | 23   | 42 | -  | -         | -   | -    |

# Lot 15

LT Unlimited Ease 9108  
Baldrige Fast Track 82 F  
Baldrige Sweetheart 53 D

## HBR Fast Track 153 P

HBR Profit 639 P  
HBR Lady Profit 103 P  
JTC Lady Program 90 P

DOB: 1/19/13

Polled

| BIRTH |    |    | WWR  |    |    | SCROT CIR |       |       |
|-------|----|----|------|----|----|-----------|-------|-------|
| 74    |    |    | 95   |    |    | 36.5      |       |       |
| BW    | WW | YW | MILK | TM | CW | REA       | FAT   | MARB  |
| 0.7   | 32 | 51 | 14   | 30 | 13 | -0.03     | 0.010 | -0.04 |

# Lot 16

HEP Auto Pilot 101H ET

HBR Auto Pilot 704 P

HBR Lady Program 464 P

## HBR Auto Pilot 155 P

HBR Pro Gro 629 P

HBR Pro-Grow 343 P TW

HBR Lady Magnum 944 P

DOB: 1/28/13

Polled

| BIRTH |    |    | WWR  |    |    | SCROT CIR |     |      |
|-------|----|----|------|----|----|-----------|-----|------|
| 90    |    |    | -    |    |    | 34.5      |     |      |
| BW    | WW | YW | MILK | TM | CW | REA       | FAT | MARB |
| 4.8   | 29 | 52 | 23   | 37 | -  | -         | -   | -    |

# Lot 17

HBR Big Mack 408 P ET

HBR Big Mack 906 P

HBR Lady Magnum 749 P

## HBR Big Mack 8309 P Twin

HBR Magnum 427 P ET

VWC Maggie 1005

HBR Lady Mack 2/34 P

DOB: 2/2/13

Polled

| BIRTH |    |    | WWR  |    |    | SCROT CIR |     |      |
|-------|----|----|------|----|----|-----------|-----|------|
| 60    |    |    | 100  |    |    | 37        |     |      |
| BW    | WW | YW | MILK | TM | CW | REA       | FAT | MARB |
| 2.4   | 27 | 48 | 14   | 27 | -  | -         | -   | -    |

# Lot 18

HBR Big Mack 408 P ET

HBR Big Mack 906 P

HBR Lady Magnum 427 P ET

## HBR Big Mack 8310 P Twin

HBR Magnum 427 P ET

VWC Maggie 1005

HBR Lady Mack 2/34 P

DOB: 2/2/13

Polled

| BIRTH |    |    | WWR  |    |    | SCROT CIR |     |      |
|-------|----|----|------|----|----|-----------|-----|------|
| 60    |    |    | 100  |    |    | 37        |     |      |
| BW    | WW | YW | MILK | TM | CW | REA       | FAT | MARB |
| 2.4   | 27 | 48 | 14   | 27 | -  | -         | -   | -    |

# Lot 19

HBR Profit 4180P

HBR Profit 672 P

HBR Dolly 604P

## HBR Profit 158 P

HEP Auto Pilot 101H ET

HBR Lady Auto Pilot 005 P

HBR Miss Complete 543P

DOB: 2/3/13

Polled

| BIRTH |    |    | WWR  |    |    | SCROT CIR |        |       |
|-------|----|----|------|----|----|-----------|--------|-------|
| 80    |    |    | 100  |    |    | 37        |        |       |
| BW    | WW | YW | MILK | TM | CW | REA       | FAT    | MARB  |
| 3.2   | 36 | 65 | 21   | 39 | 22 | 0.18      | -0.007 | -0.02 |

# Lot 20

HBR Cannon 2250 ET

HBR Cannon 017 P

HBR Lady Magnum 319 P

## HBR Cannon 682 P

HBR Auto Pilot 282 P

HBR Lady Autopilot 1050 P

VWC Maggie P61

DOB: 2/6/13

Polled

| BIRTH |    |    | WWR  |    |    | SCROT CIR |     |      |
|-------|----|----|------|----|----|-----------|-----|------|
| 85    |    |    | -    |    |    | 40        |     |      |
| BW    | WW | YW | MILK | TM | CW | REA       | FAT | MARB |
| 3.1   | 38 | 68 | 19   | 38 | -  | -         | -   | -    |

# Lot 21

VCR Sir Duke 914 PLD

HBR Equalizer 940 P ET

VCR Mac IV 902 PLD

## HBR Equalizer 305

HBR Program 297 P

HBR-Desco Patsy 914 P ET

HBR Lady Magnum 850 P

DOB: 2/1/13

Polled

| BIRTH |    |    | WWR  |    |    | SCROT CIR |        |      |
|-------|----|----|------|----|----|-----------|--------|------|
| 81    |    |    | 100  |    |    | 42        |        |      |
| BW    | WW | YW | MILK | TM | CW | REA       | FAT    | MARB |
| 1.4   | 29 | 43 | 21   | 36 | 18 | 0.16      | -0.006 | 0.06 |

# Lot 22

WCR Sir Duke 815

HBR Magnum 93 P

HBR Lady Performer 915 P

## HBR Magnum 306

Baldrige Kojack 29K

HBR-Desco Kojack Kris PET 03

HBR Lady Magnum 319 P

DOB: 2/12/13

Polled

| BIRTH |    |    | WWR  |    |    | SCROT CIR |       |      |
|-------|----|----|------|----|----|-----------|-------|------|
| 86    |    |    | 107  |    |    | 42        |       |      |
| BW    | WW | YW | MILK | TM | CW | REA       | FAT   | MARB |
| 1.8   | 38 | 60 | 21   | 40 | 17 | -0.09     | 0.002 | 0.00 |

# Lot 23

HBR Program 297 P

HBR Program 797 ET

HBR Lady Magnum 319 P

## HBR Program 161 P

HBR Program 218 P

HBR Lady Program 036 P

HBR Lady Magnum 850 P

DOB: 2/15/13

Polled

| BIRTH |    |    | WWR  |    |    | SCROT CIR |       |      |
|-------|----|----|------|----|----|-----------|-------|------|
| 80    |    |    | 103  |    |    | 36        |       |      |
| BW    | WW | YW | MILK | TM | CW | REA       | FAT   | MARB |
| 3.0   | 34 | 57 | 25   | 42 | 18 | 0.23      | 0.001 | 0.06 |

# Lot 24

HBR Big Mack 408 P ET

HBR Big Mack 906 P

HBR Lady Magnum 749 P

## HBR Big Mack 8315 P

HBR Mr. Complete 449 P TW

VWC Complete W34

VWC Duchess S48

DOB: 2/15/13

Polled

| BIRTH |    |    | WWR  |    |    | SCROT CIR |     |      |
|-------|----|----|------|----|----|-----------|-----|------|
| 80    |    |    | 100  |    |    | 41        |     |      |
| BW    | WW | YW | MILK | TM | CW | REA       | FAT | MARB |
| 3.2   | 27 | 45 | 18   | 31 | -  | -         | -   | -    |

# Lot 25

HBR Big Mack 408 P ET

HBR Big Mack 906 P

HBR Lady Magnum 749 P

## HBR Big Mack 8316 P

HBR Auto Pilot 282 P

VWC Lady Pilot 1001

VWC Lady Fasttrack S40

DOB: 2/18/13

Polled

| BIRTH |    |    | WWR  |    |    | SCROT CIR |     |      |
|-------|----|----|------|----|----|-----------|-----|------|
| 65    |    |    | 98   |    |    | 36        |     |      |
| BW    | WW | YW | MILK | TM | CW | REA       | FAT | MARB |
| 0.9   | 25 | 47 | 18   | 30 | -  | -         | -   | -    |

# Lot 26

HBR Equalizer 402 P

HBR Equalizer 915 P

HBR Lady Profit 760 P

## HBR Equalizer 8317 P

HBR Auto Pilot 282 P

VWC Lady Auto Pilot 1109

HBR Lady Big Mack 403 P

DOB: 2/18/13

Polled

| BIRTH |    |    | WWR  |    |    | SCROT CIR |     |      |
|-------|----|----|------|----|----|-----------|-----|------|
| 65    |    |    | 98   |    |    | 36        |     |      |
| BW    | WW | YW | MILK | TM | CW | REA       | FAT | MARB |
| 0.9   | 27 | 51 | 22   | 35 | -  | -         | -   | -    |

# Lot 27

SC Shadowbrook 449 ET

HBR Profit 782 P

HBR Lady Magnum 396 P

## HBR Profit 8318 P

HBR Profit 543 P

VWC Profit W21

VWC Lady Thunder S36

DOB: 2/22/13

Polled

| BIRTH |    |    | WWR  |    |    | SCROT CIR |     |      |
|-------|----|----|------|----|----|-----------|-----|------|
| 70    |    |    | 100  |    |    | 37        |     |      |
| BW    | WW | YW | MILK | TM | CW | REA       | FAT | MARB |
| 1.1   | 36 | 61 | 9    | 26 | -  | -         | -   | -    |

# Lot 28

HBR LO-HI 967 P  
E4C P814 Mr. High Point  
HBR Lady Magnum 814 P

## HBR High Point 694 P

WCR Prime Cut 764 PLD  
WLK Tom's Girl 48 P  
HBR Lady Magnum 814 P

DOB: 2/24/13

Polled

| BIRTH |    |    | WWR  |    |    | SCROT CIR |     |      |
|-------|----|----|------|----|----|-----------|-----|------|
| 99    |    |    | 96   |    |    | 34.5      |     |      |
| BW    | WW | YW | MILK | TM | CW | REA       | FAT | MARB |
| 1.5   | 31 | 53 | 11   | 27 | -  | -         | -   | -    |

# Lot 29

HBR Magnum 118 P  
HBR Magnum 625 P/S  
HBR Lady Equalizer 409 P

## HBR Magnum 163 P

HBR Cannon 612 P  
HBR Lady Cannon 019 P  
HBR Lady Profit 806 P

DOB: 2/26/13

Polled

| BIRTH |    |    | WWR  |    |    | SCROT CIR |     |      |
|-------|----|----|------|----|----|-----------|-----|------|
| 80    |    |    | 99   |    |    | 39        |     |      |
| BW    | WW | YW | MILK | TM | CW | REA       | FAT | MARB |
| 0.3   | 30 | 54 | 20   | 36 | -  | -         | -   | -    |

# Lot 30

HBR LO-HI 967 P  
E4C P814 Mr. High Point  
HBR Lady Magnum 814 P

## HBR High Point 695 P

Ace  
E4C Q48 MS Ace  
WLK Tom's Girl 48 P

DOB: 3/1/13

Polled

| BIRTH |    |    | WWR  |    |    | SCROT CIR |     |      |
|-------|----|----|------|----|----|-----------|-----|------|
| 100   |    |    | 107  |    |    | 42        |     |      |
| BW    | WW | YW | MILK | TM | CW | REA       | FAT | MARB |
| 2.7   | 37 | 60 | 11   | 30 | -  | -         | -   | -    |



# Lot 31

HBR Cannon 2250 ET

HBR Cannon 602 P

HBR Lady Magnum 850 P

## HBR Cannon 1516 P

HBR Rangemaster JJ 169

CRF Miss Ranger 806 P

CRF Miss Caprice 400 P

DOB: 3/8/13

Polled

| BIRTH |    |    | WWR  |    |    | SCROT CIR |     |      |
|-------|----|----|------|----|----|-----------|-----|------|
| 86    |    |    | 103  |    |    | 42.5      |     |      |
| BW    | WW | YW | MILK | TM | CW | REA       | FAT | MARB |
| 3.2   | 32 | 52 | 22   | 39 | -  | -         | -   | -    |

# Lot 32

HBR Magnum 514 P ET

HBR Magnum 879 P

HBR Lady Equalizer 51P/S

## HBR Magnum 689 P

MCF Novice P46 P

71 Abbey

TJC MS Abbey S03J

DOB: 3/10/13

Polled

| BIRTH |    |    | WWR  |    |    | SCROT CIR |     |      |
|-------|----|----|------|----|----|-----------|-----|------|
| 80    |    |    | -    |    |    | 36        |     |      |
| BW    | WW | YW | MILK | TM | CW | REA       | FAT | MARB |
| 1.6   | 28 | 46 | 14   | 28 | -  | -         | -   | -    |

# Lot 33

HBR Cannon 2250 ET

HBR Cannon 602 P

HBR Lady Magnum 850 P

## HBR Cannon 1517 P

HBR Magnum 93 P

HBR Lady Magnum 528 P ET

HBR Lady GI 207 P ET

DOB: 3/16/13

Polled

| BIRTH |    |    | WWR  |    |    | SCROT CIR |        |      |
|-------|----|----|------|----|----|-----------|--------|------|
| 83    |    |    | 100  |    |    | 40        |        |      |
| BW    | WW | YW | MILK | TM | CW | REA       | FAT    | MARB |
| 2.6   | 32 | 55 | 22   | 38 | 18 | -0.05     | -0.006 | 0.01 |

# Lot 34

LT Wyoming Wind 4020 PLD  
JEW Wind Power 500 P  
DW MS Desire 400 ET

## HBR Wind 502 P

LHD Cigar E46  
Bara MS Cigar 53 K  
CR Miss Mac IV 5162P

DOB: 3/19/13

Polled

| BIRTH |    |    | WWR  |    |    | SCROT CIR |     |      |
|-------|----|----|------|----|----|-----------|-----|------|
| 70    |    |    | 100  |    |    | 38        |     |      |
| BW    | WW | YW | MILK | TM | CW | REA       | FAT | MARB |
| 2.4   | 28 | 45 | 8    | 22 | -  | -         | -   | -    |

# Lot 35

HBR Cannon 2250 ET  
HBR Cannon 602 P  
HBR Lady Magnum 850 P

## HBR Cannon 1522 P

HBR Magnum 93 P  
HBR Lady Magnum 524 P/S ET  
HBR Lady GI 207 P ET

DOB: 3/29/13

Polled

| BIRTH |    |    | WWR  |    |    | SCROT CIR |        |      |
|-------|----|----|------|----|----|-----------|--------|------|
| 89    |    |    | 98   |    |    | 36        |        |      |
| BW    | WW | YW | MILK | TM | CW | REA       | FAT    | MARB |
| 3.6   | 32 | 55 | 24   | 40 | 18 | -0.05     | -0.006 | 0.01 |

# Lot 36

HEP Auto Pilot 101H ET  
HBR Auto Pilot 688 P  
HBR Dolly 8/16 P

## HBR Auto Pilot 699 P

Ace  
Q027 MS LO-HI  
E4C Lady Duke

DOB: 4/15/13

Polled

| BIRTH |    |    | WWR  |    |    | SCROT CIR |     |      |
|-------|----|----|------|----|----|-----------|-----|------|
| 60    |    |    | 100  |    |    | 35.5      |     |      |
| BW    | WW | YW | MILK | TM | CW | REA       | FAT | MARB |
| -1.0  | 30 | 57 | 20   | 35 | -  | -         | -   | -    |

# Lot 37

HBR Big Mack 408 P ET

HBR Big Mack 906 P

HBR Lady Magnum 749 P

## HBR Big Mack 8328 P

HBR Auto Pilot 282 P

VWC Lady Pilot 1010

VWC Duchess M10

DOB: 4/15/13

Polled

| BIRTH |    |    | WWR  |    |    | SCROT CIR |     |      |
|-------|----|----|------|----|----|-----------|-----|------|
| 70    |    |    | 114  |    |    | 37.5      |     |      |
| BW    | WW | YW | MILK | TM | CW | REA       | FAT | MARB |
| 1.9   | 30 | 54 | 18   | 34 | -  | -         | -   | -    |

# Lot 38

HBR Cannon 2250 ET

HBR Cannon 602 P

HBR Lady Magnum 850 P

## HBR Cannon 1519 P

HBR Cannon 2250 ET

HBR Lady Cannon 802 P

HBR Lady Magnum 986 P

DOB: 4/21/13

Polled

| BIRTH |    |    | WWR  |    |    | SCROT CIR |        |      |
|-------|----|----|------|----|----|-----------|--------|------|
| 92    |    |    | 100  |    |    | 38        |        |      |
| BW    | WW | YW | MILK | TM | CW | REA       | FAT    | MARB |
| 3.9   | 37 | 63 | 24   | 43 | 17 | -0.03     | -0.012 | 0.03 |

# Lot 39

HBR Cannon 2250 ET

HBR Cannon 602 P

HBR Lady Magnum 850 P

## HBR Cannon 1520 P

HBR Program 218 P

HBR Miss Complete 544 P

HBR Lady Auto Pilot 177 P

DOB: 4/22/13

Polled

| BIRTH |    |    | WWR  |    |    | SCROT CIR |        |      |
|-------|----|----|------|----|----|-----------|--------|------|
| 80    |    |    | 105  |    |    | 38        |        |      |
| BW    | WW | YW | MILK | TM | CW | REA       | FAT    | MARB |
| 2.9   | 43 | 73 | 20   | 42 | 22 | 0.15      | -0.009 | 0.01 |

# ROGERS BAR HR HERD SIRES



**HBR Magnum 625 P**



**SC Shadowbrook 449 ET**



**HBR Magnum 93 P**

# Money M



## BE IT GRAIN, GRASS ROGERS BAR HR B

### ROGERS BAR HR

Why are Charolais bulls the best choice for your  
you the growth you want and the pounds you ne  
producers as well as feeders recognize more pou  
has a documented\* **127 pound advantage** in the  
**\$191 more in your pocket per calf** or **\$4,760 m**  
comes to Charolais bulls, Rogers Bar HR bulls ar  
BIF tests than any other Charolais breeder in the  
the Florida Bull Test and the Hinds Bull Test. W  
Rogers Bar HR proves it. We have produced mar  
weaning, yearling, and milk. We have been bree  
in the cattle business since 1926. Come buy you

\*CSU Research Study, Colorado  
State University, Eastern  
Colorado Research Center  
(ECRC), Akron, CO



Dorot  
P.O. Box 1718  
Managing Pa  
Cell: (6  
**www.Rog**  
**1-800**  
**rogersbarl**

# **ROGERS BAR HR HERD SIRES**



**HBR Program 297 P**



**HBR Cannon 602 P**



**HBR Auto Pilot 714 P**

# Lot 40

HBR Cannon 2250 ET

HBR Cannon 602 P

HBR Lady Magnum 850 P

## HBR Cannon 1521 P

HBR Program 613 P Twin

HBR Lady Program 410 P

HBR Lady Gainer 955 P

DOB: 4/30/13

Polled

| BIRTH |    |    | WWR  |    |    | SCROT CIR |        |      |
|-------|----|----|------|----|----|-----------|--------|------|
| 79    |    |    | 98   |    |    | 38.5      |        |      |
| BW    | WW | YW | MILK | TM | CW | REA       | FAT    | MARB |
| 1.9   | 30 | 51 | 25   | 40 | 16 | -0.03     | -0.006 | 0.03 |

# Lot 41

HBR Magnum 93 P

HBR Magnum 427 P ET

HBR Lady GI 207 P ET

## HBR Magnum 559 P

HBR Magnum 427 P ET

JEW Maggie Y03

PSF Lady Duke 603

DOB: 7/21/13

Polled

| BIRTH |    |    | WWR  |    |    | SCROT CIR |       |       |
|-------|----|----|------|----|----|-----------|-------|-------|
| 74    |    |    | 99   |    |    | 36        |       |       |
| BW    | WW | YW | MILK | TM | CW | REA       | FAT   | MARB  |
| 2.3   | 28 | 45 | 16   | 30 | 18 | -0.09     | 0.001 | -0.01 |

# Lot 42

HBR Magnum 93 P

HBR Magnum 427 P ET

HBR Lady GI P ET

## HBR Magnum 558 P

LT Wyoming Wind 4020 PLD

TMF MS Lizzie A708 ET

JEW MS Eliminator F548

DOB: 8/4/13

Polled

| BIRTH |    |    | WWR  |    |    | SCROT CIR |       |       |
|-------|----|----|------|----|----|-----------|-------|-------|
| 80    |    |    | 101  |    |    | 37        |       |       |
| BW    | WW | YW | MILK | TM | CW | REA       | FAT   | MARB  |
| 1.9   | 31 | 51 | 12   | 28 | 13 | 0.06      | 0.007 | -0.05 |

# Lot 43

RAC Mac's Factor 171 A  
HBR Program 297 P  
HBR Lady Liz 721 P

## HBR Program 165 P

HEP Auto Pilot 101H ET  
HBR Lady Auto Pilot 061 P  
HBR Lady Profit 772 P

DOB: 9/8/13

Polled

| BIRTH |    |    | WWR  |    |    | SCROT CIR |       |      |
|-------|----|----|------|----|----|-----------|-------|------|
| 70    |    |    | 90   |    |    | 32.5      |       |      |
| BW    | WW | YW | MILK | TM | CW | REA       | FAT   | MARB |
| 1.4   | 30 | 54 | 21   | 35 | 18 | 0.34      | 0.004 | 0.07 |

# Lot 44

WCR Sir Duke 815  
HBR Magnum 93 P  
HRB Lady Performer 915 P

## HBR Magnum 166 P

HEP Auto Pilot 101H ET  
HBR Lady Auto Pilot 064 P  
HRB Lady Equalizer 65P

DOB: 9/8/13

Polled

| BIRTH |    |    | WWR  |    |    | SCROT CIR |       |       |
|-------|----|----|------|----|----|-----------|-------|-------|
| 80    |    |    | 109  |    |    | 39        |       |       |
| BW    | WW | YW | MILK | TM | CW | REA       | FAT   | MARB  |
| 3.1   | 41 | 72 | 23   | 44 | 29 | 0.20      | 0.003 | -0.04 |

# Lot 45

RAC Mac's Factor 171A  
HBR Program 297 P  
HBR Lady Liz 721 P

## HBR Program 167 P

Double-H Icon 034K ET  
HBR Lady Icon 434 P  
HBR Lady Magnum 773 F

DOB: 9/10/13

Polled

| BIRTH |    |    | WWR  |    |    | SCROT CIR |     |      |
|-------|----|----|------|----|----|-----------|-----|------|
| 80    |    |    | 95   |    |    | 34        |     |      |
| BW    | WW | YW | MILK | TM | CW | REA       | FAT | MARB |
| 2.3   | 33 | 52 | 17   | 33 | -  | -         | -   | -    |



# Lot 46

RAC Mac's Factor 171 A

HBR Program 297 P

HBR Lady Liz 721 P

## HBR Program 169 P TW

HBR Magnum 514 P ET

HBR Lady Magnum 060 P

HBR Lady Magnum 950 P

DOB: 9/13/13

Polled

| BIRTH |    |    | WWR  |    |    | SCROT CIR |       |      |
|-------|----|----|------|----|----|-----------|-------|------|
| 60    |    |    | 100  |    |    | 32        |       |      |
| BW    | WW | YW | MILK | TM | CW | REA       | FAT   | MARB |
| 2.1   | 28 | 45 | 20   | 34 | 10 | 0.12      | 0.003 | 0.09 |

# Lot 47

RAC Mac's Factor 171 A

HBR Program 297 P

HBR Lady Liz 721 P

## HBR Program 170 P TW

HBR Magnum 514 P ET

HBR Lady Magnum 060 P

HBR Lady Magnum 950 P

DOB: 9/13/13

Polled

| BIRTH |    |    | WWR  |    |    | SCROT CIR |       |      |
|-------|----|----|------|----|----|-----------|-------|------|
| 54    |    |    | 100  |    |    | 31.5      |       |      |
| BW    | WW | YW | MILK | TM | CW | REA       | FAT   | MARB |
| 0.9   | 28 | 45 | 20   | 34 | 10 | 0.01      | 0.003 | 0.09 |

# Lot 48

RAC Mac's Factor 171A

HBR Program 297 P

HBR Lady Liz 721 P

## HBR Program 171 P

HBR Equalizer 402 P

HBR Lady Equalizer 16 P

HBR Lady Magnum S50

DOB: 9/14/13

Polled

| BIRTH |    |    | WWR  |    |    | SCROT CIR |     |      |
|-------|----|----|------|----|----|-----------|-----|------|
| 76    |    |    | 99   |    |    | 35        |     |      |
| BW    | WW | YW | MILK | TM | CW | REA       | FAT | MARB |
| 2.5   | 30 | 47 | 21   | 36 | -  | -         | -   | -    |

# Lot 49

WCR Sir Duke 815

HBR Magnum 93 P

HBR Lady Performer 915 P

## HBR Magnum 173 P

HBR Profit 672 P

HBR Lady Profit 122 P

HBR Lady Cannon 835 P

DOB: 9/14/13

Polled

| BIRTH |    |    | WWR  |    |    | SCROT CIR |        |      |
|-------|----|----|------|----|----|-----------|--------|------|
| 66    |    |    | 103  |    |    | 37.5      |        |      |
| BW    | WW | YW | MILK | TM | CW | REA       | FAT    | MARB |
| 0.1   | 32 | 54 | 20   | 37 | 23 | -0.01     | -0.006 | 0.02 |

# Lot 50

SC Shadowbrook 449 ET

HBR Profit 763 P

HBR Lady Equalizer 51P/S

## HBR Profit 176 P

HBR Program 297 P

HBR Lady Program 187 P

HBR Lady Magnum 543 P

DOB: 9/16/13

Polled

| BIRTH |    |    | WWR  |    |    | SCROT CIR |       |       |
|-------|----|----|------|----|----|-----------|-------|-------|
| 82    |    |    | 107  |    |    | 38        |       |       |
| BW    | WW | YW | MILK | TM | CW | REA       | FAT   | MARB  |
| 4.0   | 44 | 70 | 15   | 37 | 30 | 0.30      | 0.006 | -0.02 |

# Lot 51

SC Shadowbrook 449 ET

HBR Profit 639 P

HBR Lady Program 448 P

## HBR Profit 179 P

HBR Cannon 2250 ET

HBR Lady Cannon 852 P

HBR Lady Magnum 542 P

DOB: 9/20/13

Polled

| BIRTH |    |    | WWR  |    |    | SCROT CIR |        |      |
|-------|----|----|------|----|----|-----------|--------|------|
| 82    |    |    | 104  |    |    | 35        |        |      |
| BW    | WW | YW | MILK | TM | CW | REA       | FAT    | MARB |
| 2.6   | 43 | 74 | 18   | 40 | 28 | 0.04      | -0.006 | 0.03 |

# Lot 52

HEP Auto Pilot 101H ET

HBR Auto Pilot 714 P

HBR Lady Equalizer 409 P

## HBR Auto Pilot 180 P TW

HBR Big Mack 115 P

JL MS Mac 86

Orr's Ms Mary 417 P

DOB: 9/22/13

Polled

| BIRTH |    |    | WWR  |    |    | SCROT CIR |     |      |
|-------|----|----|------|----|----|-----------|-----|------|
| 54    |    |    | 100  |    |    | 38        |     |      |
| BW    | WW | YW | MILK | TM | CW | REA       | FAT | MARB |
| 1.1   | 29 | 58 | 21   | 35 | -  | -         | -   | -    |

# Lot 53

HEP Auto Pilot 101H ET

HBR Auto Pilot 714 P

HBR Lady Equalizer 409 P

## HBR Auto Pilot 181 P TW

HBR Big Mack 115 P

JL MS Mack 86

Orr's Ms Mary 417 P

DOB: 9/22/13

Polled

| BIRTH |    |    | WWR  |    |    | SCROT CIR |     |      |
|-------|----|----|------|----|----|-----------|-----|------|
| 48    |    |    | 100  |    |    | 38.5      |     |      |
| BW    | WW | YW | MILK | TM | CW | REA       | FAT | MARB |
| -0.4  | 29 | 58 | 21   | 35 | -  | -         | -   | -    |

# Lot 54

RAC Mac's Factor 171A

HBR Program 297 P

HBR Lady Liz 721 P

## HBR Program 182 P

SC Shadowbrook 416 ET

HBR Lady Profit 955 P/S

HBR Lady Power T 146 P

DOB: 9/22/13

Polled

| BIRTH |    |    | WWR  |    |    | SCROT CIR |     |      |
|-------|----|----|------|----|----|-----------|-----|------|
| 88    |    |    | 100  |    |    | 32        |     |      |
| BW    | WW | YW | MILK | TM | CW | REA       | FAT | MARB |
| 5.0   | 36 | 57 | 19   | 37 | -  | -         | -   | -    |

# Lot 55

SC Shadowbrook 449 ET

HBR Profit 639 P

HBR Lady Program 448 P

## HBR Profit 183 P

HBR Magnum 212 P

HBR Lady Magnum 216 P

SLW Lady Performer 69 P

DOB: 9/23/13

Polled

| BIRTH |    |    | WWR  |    |    | SCROT CIR |     |      |
|-------|----|----|------|----|----|-----------|-----|------|
| 90    |    |    | 110  |    |    | 39        |     |      |
| BW    | WW | YW | MILK | TM | CW | REA       | FAT | MARB |
| 5.3   | 48 | 79 | 13   | 37 | -  | -         | -   | -    |

# Lot 56

SC Shadowbrook 449 ET

HBR Profit 639 P

HBR Lady Program 448 P

## HBR Profit 184 P

HBR Equalizer 941 P ET

HBR Lady Equalizer 65P

HBR Lady Magnum 214 P

DOB: 9/25/13

Polled

| BIRTH |    |    | WWR  |    |    | SCROT CIR |        |       |
|-------|----|----|------|----|----|-----------|--------|-------|
| 78    |    |    | 111  |    |    | 38.5      |        |       |
| BW    | WW | YW | MILK | TM | CW | REA       | FAT    | MARB  |
| 3.0   | 45 | 77 | 20   | 42 | 33 | 0.15      | -0.006 | -0.01 |

# Lot 57

HBR Cannon 2250 ET

HBR Cannon 602 P

HBR Lady Magnum 850 P

## HBR Cannon 185 P

HBR Auto Pilot 130 P

HBR Dorothy 633 P

HBR Prolific Momma JJ123

DOB: 10/5/13

Polled

| BIRTH |    |    | WWR  |    |    | SCROT CIR |        |      |
|-------|----|----|------|----|----|-----------|--------|------|
| 86    |    |    | 102  |    |    | 36.5      |        |      |
| BW    | WW | YW | MILK | TM | CW | REA       | FAT    | MARB |
| 3.6   | 35 | 63 | 25   | 43 | 22 | 0.19      | -0.012 | 0.00 |

# Lot 58

HEP Auto Pilot 101H ET

HBR Auto Pilot 714 P

HBR Lady Equalizer 409 P

## HBR Auto Pilot 186 P

HBR Mr. Complete 517 P

HBR Lady Complete 027 P

HBR Lady Program 537P

DOB: 10/6/13

Polled

| BIRTH |    |    | WWR  |    |    | SCROT CIR |     |      |
|-------|----|----|------|----|----|-----------|-----|------|
| 78    |    |    | 94   |    |    | 33        |     |      |
| BW    | WW | YW | MILK | TM | CW | REA       | FAT | MARB |
| 2.3   | 28 | 52 | 25   | 39 | -  | -         | -   | -    |

# Lot 59

SC Shadowbrook 449 ET

HBR Profit 639 P

HBR Lady Program 448 P

## HBR Profit 187 P

HBR Magnum 347 P

HBR Lady Magnum 950 P

WFC Lady Ace 714 P

DOB: 10/7/13

Polled

| BIRTH |    |    | WWR  |    |    | SCROT CIR |     |      |
|-------|----|----|------|----|----|-----------|-----|------|
| 90    |    |    | 100  |    |    | 36        |     |      |
| BW    | WW | YW | MILK | TM | CW | REA       | FAT | MARB |
| 4.7   | 41 | 69 | 18   | 38 | -  | -         | -   | -    |

# Lot 60

HBR Cannon 2250 ET

HBR Cannon 602 P

HBR Lady Magnum 850 P

## HBR Cannon 189 P

HEP Auto Pilot 101H ET

HBR Lady Auto Pilot 834 P

HBR Miss Complete 527P

DOB: 10/12/13

Polled

| BIRTH |    |    | WWR  |    |    | SCROT CIR |        |       |
|-------|----|----|------|----|----|-----------|--------|-------|
| 86    |    |    | 105  |    |    | -         |        |       |
| BW    | WW | YW | MILK | TM | CW | REA       | FAT    | MARB  |
| 4.1   | 38 | 67 | 26   | 45 | 24 | 0.22      | -0.007 | -0.01 |

\* Coming off Hinds Test

# Lot 61

HEP Auto Pilot 101H ET

HBR Auto Pilot 714 P

HBR Lady Equalizer 409 P

## HBR Auto Pilot 193 P

HBR Cannon 2250 ET

HBR Lady Cannon 660 P

HBR Lady Magnum 993 P

DOB: 10/16/13

Polled

| BIRTH |    |    | WWR  |    |    | SCROT CIR |     |      |
|-------|----|----|------|----|----|-----------|-----|------|
| 80    |    |    | 104  |    |    | -         |     |      |
| BW    | WW | YW | MILK | TM | CW | REA       | FAT | MARB |
| 2.4   | 34 | 63 | 23   | 40 | -  | -         | -   | -    |

\* Coming off Hinds Test

# Lot 62

HBR Cannon 2250 ET

HBR Cannon 602 P

HBR Lady Magnum 850 P

## HBR Cannon 197 P/S

HBR Magnum 93 P

HBR Lady Magnum S50

VWC Duchess N844

DOB: 10/23/13

Polled

| BIRTH |    |    | WWR  |    |    | SCROT CIR |        |      |
|-------|----|----|------|----|----|-----------|--------|------|
| 94    |    |    | 108  |    |    | 36.5      |        |      |
| BW    | WW | YW | MILK | TM | CW | REA       | FAT    | MARB |
| 4.7   | 42 | 68 | 22   | 43 | 18 | -0.05     | -0.006 | 0.01 |

# Lot 63

HBR Cannon 2250 ET

HBR Cannon 602 P

HBR Lady Magnum 850 P

## HBR Cannon 198 P

HBR Program 218 P

HBR Miss Complete 527P

HBR Lady Magnum 604 P

DOB: 10/23/13

Polled

| BIRTH |    |    | WWR  |    |    | SCROT CIR |        |      |
|-------|----|----|------|----|----|-----------|--------|------|
| 80    |    |    | 100  |    |    | 34.5      |        |      |
| BW    | WW | YW | MILK | TM | CW | REA       | FAT    | MARB |
| 3.0   | 35 | 57 | 25   | 42 | 20 | 0.04      | -0.008 | 0.02 |

# Lot 64

HBR Magnum 93 P

HBR Magnum 427 P ET

HBR Lady GI 207 P ET

## HBR Magnum 566 P

HBR Mr. Complete 449P TW

JEW Ms. Mags Compelte

HBR Lady Magnum 378 P

DOB: 11/17/13

Polled

| BIRTH |    |    | WWR  |    |    | SCROT CIR |     |      |
|-------|----|----|------|----|----|-----------|-----|------|
| 90    |    |    | 100  |    |    | 37        |     |      |
| BW    | WW | YW | MILK | TM | CW | REA       | FAT | MARB |
| 2.9   | 35 | 58 | 18   | 35 | -  | -         | -   | -    |

# Lot 65

HBR Cannon 2250 ET

HBR Cannon 602 P

HBR Lady Magnum 850 P

## HBR Cannon 202 P

HBR Magnum 93 P

HBR Lady Magnum 944 P

HBR Lady Mack 381 P ET

DOB: 10/29/13

Polled

| BIRTH |    |    | WWR  |    |    | SCROT CIR |        |       |
|-------|----|----|------|----|----|-----------|--------|-------|
| 78    |    |    | 111  |    |    | -         |        |       |
| BW    | WW | YW | MILK | TM | CW | REA       | FAT    | MARB  |
| 4.0   | 38 | 60 | 21   | 41 | 21 | 0.01      | -0.008 | -0.01 |

\* Coming off Hinds Test

## **Bred Brangus Heifers**

We think brood cows should be adapted to the environment where they will be raised. We think these Brangus females do just that.

This year we are offering approximately 140 bred heifers. All heifers will be pregnancy tested and have had their pelvic measured. The bred heifers will be grouped according to due date, weight and amount of ear. They will be sold in groups of 3 and 4. As last year, the Brangus will not run thru the ring; we will have them videotaped by lots. This keeps the heifers from getting excited before we sell them. They will be penned on sale day as they will be sold. If you did not attend the sale last year just ask me or one of the guys in the red shirts and we will be glad to help you.

100 of the heifers will calve this spring (approximately April). All of the spring calvers are bred to easy calving Angus bulls.

40 of the heifers will calve this fall and are also bred to easy calving Angus bulls.

All heifers will have their pelvis measured and their reproductive track inspected for any problems. We have selected these heifers from a large group. Any animal that had a small pelvis or an unsound reproductive system was eliminated.

Many factors contribute to dystocia (calving problems) in heifers. While we stress that we have not eliminated all of the factors related to calving problems, we feel that our offering of heifers will have far fewer problems than most.

They have been vaccinated for IBR, BVD, P13, Blackleg, and Lepto, treated with Spotton and wormed with Dectomax.

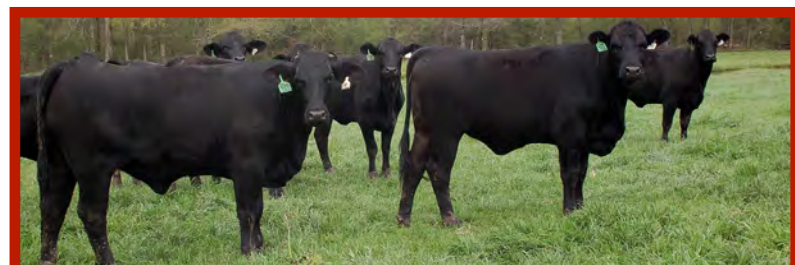
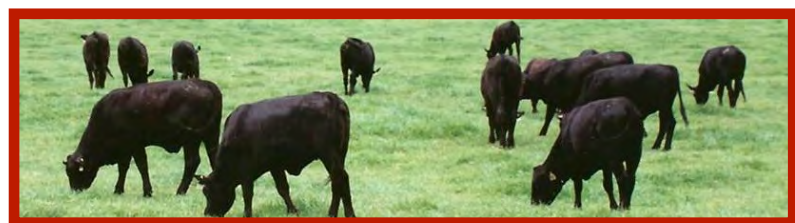
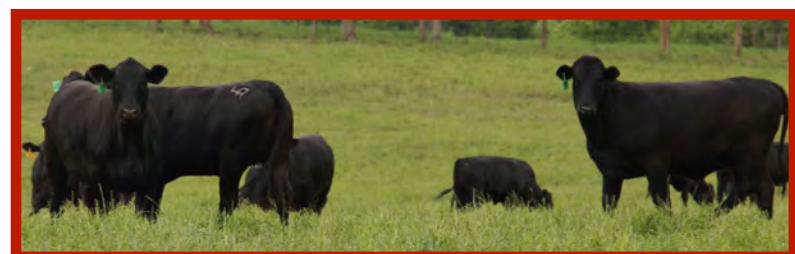
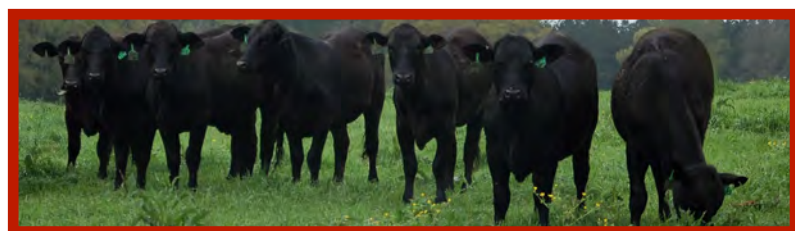
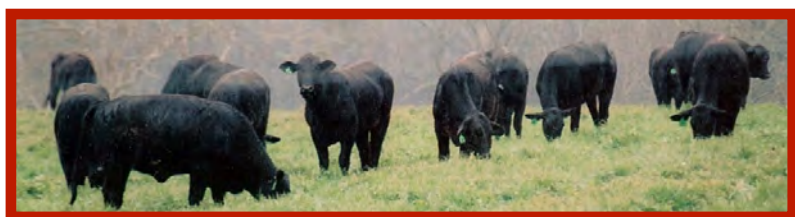
All heifers will be available for your viewing on February 21<sup>st</sup>. We invite you to come by and look at the animals.



Selling 140  
Brangus Heifers  
100 Bred Spring Calvers  
40 Bred Fall Calvers



- Pelvic Measurements
- Reproductive Tract Examined
- Offering Selected Out of a Large Group
- Heifers Adapted to Southeastern Environment





# A History of Being Outstanding in Our Field.

Need to talk Ag Lending? See us today.



**Peoples Bank**

*Mississippi's Main Street Bank*

COLLINS • MAGEE • MENDENHALL • PUCKETT

[peoplesbank-ms.com](http://peoplesbank-ms.com)

Follow us on:

MEMBER  
**FDIC**



Rachel Pickering  
Owner

## **Collins Inn & Suites**

#8 Grandview Drive  
Collins, MS 39428

601-765-0800

Located in Collins, Mississippi,  
approximately 30 minutes north of  
Hattiesburg and 60 minutes south of  
Jackson, on Highway 49 at the  
intersection of Highway 84.

Visit Grand Paradise Water Park  
located behind Collins Inn & Suites.

## **Don's Farm Store**

Highway 49 - Collins, Mississippi  
601-765-8264

- Priefert chutes,  
panels & gates
- Red Brand, Gaucho  
& Oklahoma barb  
wire
- Oklahoma wire  
cattle panels
- Modern Farm  
Implements
- SMI Steel Posts



*Open Monday - Friday 7:30 - 5:00  
& Saturday 7:30 - 12:00*

*For all your catching  
& fencing needs!*

# StockPro Animal Health

Antibiotics □ Vaccines □ De-wormers □  
Implants □  
AI & Breeding Supplies □ And SO MUCH  
more!



StockPro Animal Health is a **VOLUME** distributor of  
Animal Health Supplies, located at:

**115 Main Street (next to Main Street Café)  
Collins, MS 39428**

**Ph: 601.517.8178**

*Store Hours: Mon – Fri, 8AM – 4PM*

*Licensed Vet on Staff: Dr. Anna Ketchum, DVM*

**Competitive Pricing & 24 hr In-State Delivery**



## Cattle Buying Yard

Buying All Classes of Yearlings and Calves

***NO COMMISSION & NO SHRINK***

***\*Cattle Weighed on State Certified Scales\****

*Also offering Forward Contracting on Yearling Cattle*

**EVERY MONDAY 7AM – 12PM**

**OR BY APPOINTMENT**

**Hauling Available - Reasonable  
Rates!**

**Call for Directions**

**Hwy 28, 7 miles West of Magee, MS**

**LEVI ROGERS: #601-315-1009**

# **Terrible Creek Camp**



## **Cabins Available for Rent**

**TV - Grills - Cook Sheds - Hot Tub**

**Parking Available for Cattle Trailers**

**Coffee and Donuts Available Each Morning**

**2 Miles from Rogers Bar HR on HWY 84 West**



**\$75 per night  
Cash or Check Accepted**

**(601)517-0935**

